

THE BRAND BOOK

TOLLGARD

[WWW.TOLLGARD.COM](http://WWW.TOLLGARD.COM)



A STORY OF SPACE,  
LIFE & KINSHIP

TOLLGARD



**Staffan Tollgård**

Staffan is an award-winning interior and product designer as well as an internationally recognised curator of global contemporary design. Born in Stockholm, he went on to study film at Bournemouth University and later design at the Inchbald School where he crystallised his ethos into two principles. The search for the Scandinavian notion of the distinctive ‘Red Thread’ or creative DNA in each project, and the commitment to the creation of functional sculpture underline every project he undertakes. These twin philosophies have also led to the founding of three London-based design stores housing modern and contemporary design classics from around the globe.

**Monique Tollgård**

Monique grew up in Johannesburg and London. A childhood spent moving between countries and cultures ignited a lifelong love of travel and a fascination with how different cultures answer questions of living. Monique’s love of storytelling led her to a First-Class degree in English Language & Literature at Oxford University, followed by work as an actress and producer of documentaries before finding home within interior design. Monique trained in design at The Inchbald School and now regularly lectures there, as well as taking an active role in the design industry as a sought-after speaker, writer and thought leader.





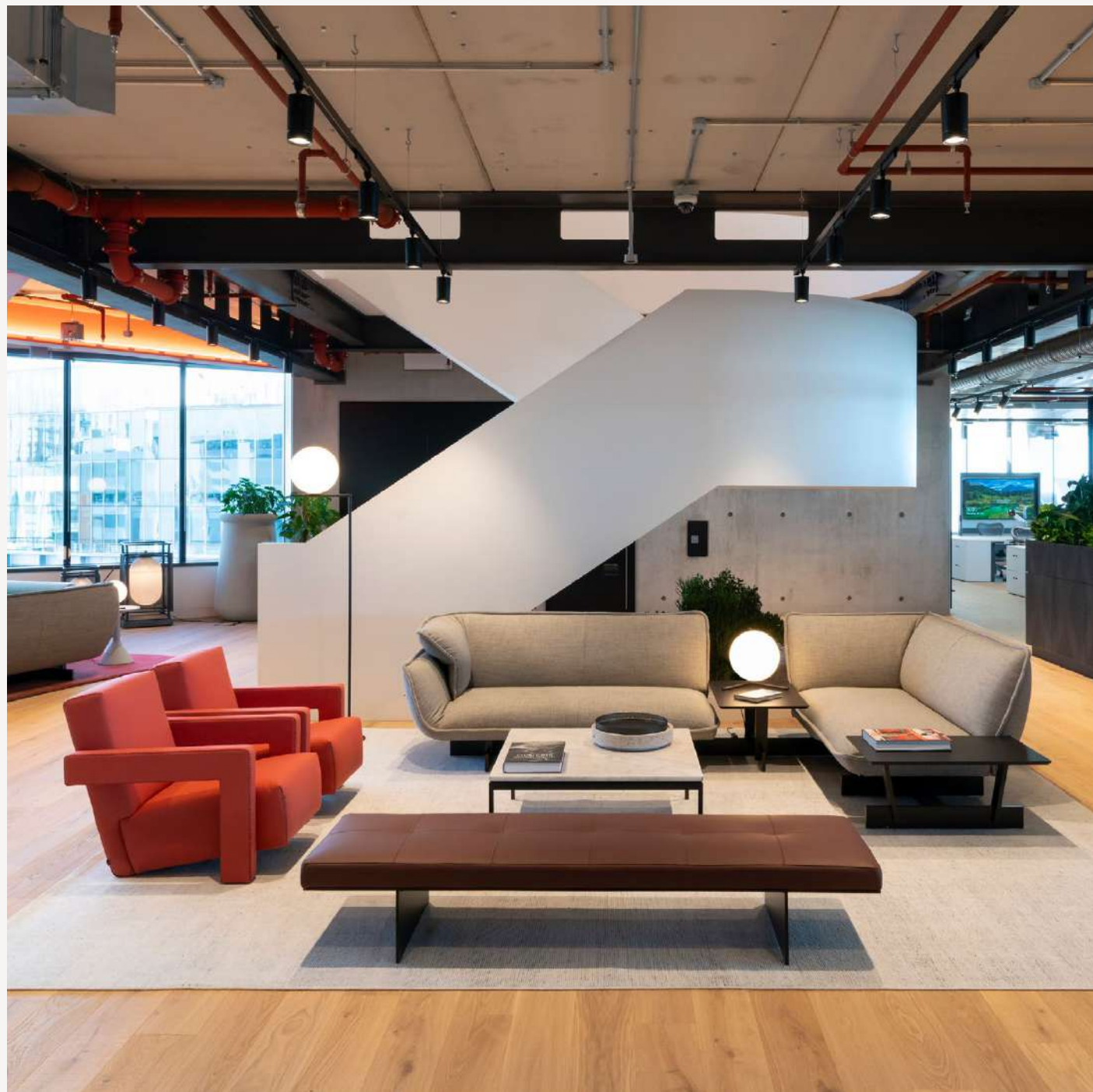


← Our showrooms are home to a roster of international brands built on authentic design values and impeccable craftsmanship.

→ We are proud to operate Ceccotti's London showroom, showcasing its portfolio of furniture and lighting—instantly recognisable for its elegant curves, contemporary eccentricity, and impeccable finish.







← For the Dojo's new London offices, Tollgard Contracts supplied pieces with a residential, timeless, mid-century modern feel to connect the essence of home with the functionality of the office.

Starting with a handful of brands that Staffan and Monique were eager to share with the design community, Tollgard has quickly grown into a library of over 200 global brands, offering furniture, lighting, and accessories.

**Relationships:** We are hands-on, and service driven. We build warm, long-standing relationships with our clients and aim to add value at every stage we are needed. From the outset through our in-depth product knowledge, or ownership of a finished scheme to ensure things runs smoothly and efficiently.

**Consultation:** With free and unbiased furniture and lighting specification service, we specialise in modern and contemporary furniture across residential and commercial projects with our portfolio of global brands. Fast, attentive sampling. Deep brand knowledge. Project managed deliveries. Commercially suitable products for each sector. Unrivalled problem-solving.

**Inspiration:** Tollgard aims to be a reference point for the creative community, sharing our discoveries and leading a journey of collective inspiration. We represent manufacturers that share our passion for functional design and impeccable craft.





Our Showrooms:

**Tollgard Chelsea & Ceccotti Collezioni**  
First Floor, Centre Dome  
Design Centre Chelsea Harbour  
London  
SW10 0XE

**Tollgard Belgravia**  
Grosvenor Waterside  
Gatliff Road  
London  
SW1W 8QN

Tollgard Showrooms

Curating the best of contemporary global design, Tollgard are proud to offer three showrooms in London. Ceccotti Collezioni and Tollgard Chelsea are found in the Design Centre Chelsea Harbour. Our flagship showroom is a little further down the river at Grosvenor Waterside, Belgravia.

If you're working on a residential project, please get in touch with our team of showroom specialists.

+44 (0)20 8067 2123 ~ CHELSEA HARBOUR  
+44 (0)20 7952 6070 ~ BELGRAVIA  
SHOP@TOLLGARD.COM

Tollgard Contracts:

**Tollgard Belgravia**  
Grosvenor Waterside  
Gatliff Road  
London  
SW1W 8QN

Tollgard Contracts

Dedicated to commercial supply, Tollgard Contracts works across all sectors including workspace and hospitality. Tollgard Contracts operates from Grosvenor Waterside, Belgravia.

If you would like to discuss a commercial project with us, please speak to our experienced Contracts Team, headed by Max Pilbeam and Dominique Lucas.

+44 (0)20 7952 6063  
CONTRACTS@TOLLGARD.COM



“Many of our brand partners share  
our DNA: a commitment to service,  
a passion for design excellence  
and a story worth sharing.”

Staffan Tollgård  
Founder and Creative Director

OUR BRANDS

TOLLGARD



From Ceccotti Collezioni, Overgaard & Dyrman and Van Rossum on our European shores; to the East Coast heroes found at BassamFellows, Token, Skram, Juniper and RBW; to the South African artisans at Indigenus and Okha—we see a richness and a rawness that makes it hard to look away. Welcome to our Brand Book. We are so proud to bring this collection to you.

# Index

OUR BRANDS

16	Agapecasa	95	Luteca
18	Alphenberg	98	Malte Gormsen Kollektion
20	ANDlight	100	Matthew McCormick
21	Anour	102	Mernøe
22	Arflex	103	Moroso
24	Aqua Creations	105	Man of Parts
26	Astep	108	Meridiani
27	Bocci	110	Michael Anastassiades
28	BassamFellows	112	Molteni & C
30	Bieke Casteleyn	114	Nemo
31	Buster & Punch	116	Occhio
32	Bomma	118	OKHA
34	Byarums Bruk	119	OneCollection
37	Ceccotti Collezioni	120	Overgaard & Dyrman
40	Cocoon	123	Piet Boon
41	Collector Group	126	Poltrona Frau
42	CTO Lighting	128	Porada
45	De Castelli	130	PP Møbler
48	De La Espada	131	Quasar Holland
50	Desalto	133	RBW
53	Eikund	136	Rakumba
56	Entrelacs	138	Resident
59	Exteta	139	Röshults
62	House of Finn Juhl	140	RS Barcelona
64	Flexform	141	SkLO
66	Gabriel Scott	143	Skram
68	Gemla	146	System 180
70	Giopatto and Coombes	148	Tacchini
72	Giorgetti	150	Thayer Coggin
75	Henge	151	Time & Style
79	Indigenus	152	Token
83	Juniper	153	Tom Fereday
86	KBH	154	Van Rossum
87	Karakter	156	Vibia
88	La Manufacture	159	Vipp
89	Lasvit	162	Wittmann
91	Linteloo	163	Zanotta





CLUB 44 CHAIR

## AGAPECASA

### Agapecasa

Founded in 1973, Agapecasa is today a byword for beautiful, contemporary home furnishings. In partnership with the Angelo Mangiarotti estate, Agapecasa breathes new life into a series of unique furniture designs by the great Angelo Mangiarotti: an icon of 20th-century design. A hand-picked collection of gems, the collection includes luminaires, chairs, tables, shelves and storage units; each skilfully crafted using the designer's original blueprints and functioning innovatively and intelligently for modern life.

Origin: **Italy**  
Offering: **Furniture | Lighting**



EROS COFFEE TABLE



EROS TRIANGOLARE



M TABLE



ECCENTRICO TABLES



ASOLO





# ALPHENBERG

**Alphenberg**  
 Alphenberg believe that leather should look like leather. It's a slow material: the buffalo skin the reflection of life in a rough terrain. Skin is not something that can be 'made', it comes into being through the process of living and growing. This Dutch company are at the forefront of working with leather in architectural and interior design, using leather to provide acoustic, aesthetic and architectural solutions. Tollgard believe that Broom, Alphenberg's acoustic solution, is a game-changer in marrying form with function. Broom is elegantly fluted, tactile and luxurious. Simple to install with ready-made panels in leather and suede.

Origin: **Holland**  
 Offering: **Leather Applications**







IRIS PENDANTS



COLUMN SYSTEM



I MODEL PENDANT



T MODEL



#### ANDlight

From their native Vancouver, designers Lukas Peet and Caine Heintzman founded ANDlight together with Matt Davis in 2014 with the simple intention of creating beautiful lighting that is made honestly and authentically, every step of the way. ANDlight's designs have a striking level of visual impact and are technically flawless. They produce exceptional quality light for the workplace and home, without sacrificing their aesthetic: bold, and a little playful.

Origin: **Canada**  
Offering: **Lighting**



VALE SYSTEM



I MODEL SCNCE



#### Anour

Anour lighting was established in 2007 by founder and architect Arash Nourinejad. The company produces lighting for the home that combines distinctly Danish design with the very latest LED technology. Sustainability is at the heart of the business, and Arash creates his collections with the intention that they will endure. Aesthetically, they are the essence of simplicity; truly ageless designs that are made by only the most skilled hands, using the very finest materials.

Origin: **Denmark**  
Offering: **Lighting**





9000 SOFA AND GOYA SIDE TABLE

arflex

#### Arflex

Italian fine furniture maker, Arflex began their journey of design in 1947 when a group of Pirelli technicians began experimenting with material and technological tradition. Their philosophy was rooted in fusing great design with innovative technology. The result would be a truly unique collection of furniture that feels modern and clean but simultaneously warm and inviting. The Arflex portfolio features design icons of the 1970's alongside contemporary creations. They have collaborated with designers and architects across the globe including the likes of Claesson Koivisto Rune, Neri & Hu and Jaime Hayon. Through each new piece, they marry the design heritage of the past with the innovation of the future.

Origin: **Italy**  
Offering: **Furniture | Accessories | Outdoor**



MARENCO SOFA SYSTEM

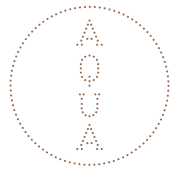


ARCOLORSOFA, INFINITY COFFEE TABLE AND HUG ARMCHAIRS





SEA OF GALILEE WALL LIGHT



#### Aqua Creations

Inspired by nature, Aqua Creations breathe life into bodies of light. Their signature approach since 1992 is uniquely personal, with each lamp ordered assigned to three artisans, each tasked with the responsibility of one signature element: metal or woodwork, electricity and shade. This means that each of Aqua Creations' lamps are as unique as the people who make them. Innovative technology, master craftsmanship and spell-binding design combine to fuse incandescent light with function, and to create art.

Origin: **Israel**  
Offering: **Lighting**



PALM TREE FLOOR LAMP



LAKE CHAD MOBILE 3





SB CINQUANTOTTO PENDANT



#### Astep

Founded by Alessandro Sarfatti, grandson of the Italian 'master of light' Gino Sarfatti, Astep was created in honour of the family's tradition of innovation: its very name is suggestive of forward motion. From his base in Copenhagen, Alessandro draws on his own extraordinary family heritage and continues to explore and push the boundaries of design today. Under his expert eye, Astep presents an edit of lighting that nods to the past whilst incorporating state-of-the-art technology to enhance the way we live.

Origin: **Denmark**  
Offering: **Lighting**



MODEL 2109 CHANDELIER



28



73V PENDANT

## BOCCI

#### Bocci

Founded by Omer Arbel in 2005, Bocci is a lighting design and manufacturing company that sits at the intersection of architecture, sculpture, invention and design. The company launched with one lighting design, '14', which remains a design classic and one of Bocci's most popular creations. Alongside '14', Bocci's growing portfolio of sculptural lighting pieces are all developed, engineered and fabricated in-house. Omer Arbel's work is particularly concerned with the mechanical, practical and chemical qualities of the materials that he uses, as well as the exploration of light as a medium.

Origin: **Canada**  
Offering: **Lighting**





BRUTUS CHAIR



TRACTOR BARSTOOL



SPINDLE STOOL

## BassamFellows

**BassamFellows**  
The creation of architect Craig Bassam and creative director Scott Fellows, BassamFellows is an American luxury lifestyle company grounded in the principles of impeccable craftsmanship, architectural rigour, and understated sensual minimalism. With a modern craftsman aesthetic, BassamFellows seeks to forge innovative and intelligent collaborations across the world. Pieces are meticulously crafted with solid wood, robust steel, and sumptuously smooth leather. Ageing beautifully, these are true future heirlooms.

Origin: **USA**  
Offering: **Furniture**



CB-40L DINING BENCH



GEOMETRIC LOUNGE CHAIR





**BC BIEKE CASTELEYN**

**Bieke Casteleyn**  
 Rejecting conformity for innovation, Belgian interior designer Bieke Casteleyn created her contemporary collection, Bieke Casteleyn\_shaping objects in 2015. The organic forms she dreamt to life prove to be more than just beautiful pieces of art. Soft, subtle, and inviting, each table is a bespoke creation that focuses on elevating the living experience. Hand-made in Belgium, each table is created using a cement-based plaster technique that is carefully applied in several layers.

Origin: **Belgium**  
 Offering: **Furniture**



OUT OF LINE



FORKED PENDANT SHADE GLOBE



EXHAUST SURFACE

**BUSTER+PUNCH**  
 LONDON

**Buster & Punch**  
 It's difficult to find a brand that feels as rock-and-roll as British makers, Buster & Punch. In the time-honoured tradition of many a rockstar, founder Massimo Buster Minale began to perfect his craft from his East London garage, building custom motorbikes. Trained as an architect, he realized his passion for reinventing the every day, working rare metals into extraordinary objects that sang with captivating detail. Inspired by the edge and appeal of London's fashion, music and sub-culture scenes, the brand has continued to break the rules, bringing to life an album of furniture, fittings, kitchens and accessories that hit the right note every time.

Origin: **UK**  
 Offering: **Furniture | Lighting**





PEBBLES COLLECTION

# bomma

**Bomma**  
BOMMA's glassmakers work at the very edge of what is physically and technically possible. Born from the historic Bohemian region, this Czech company is not content to maintain historic techniques, but to master and surpass them through their unique approach of cutting-edge design and hand-crafted expertise. They have a minimalist yet daring aesthetic that has garnered fans from across the design world. Tollgard favourites include the playful Pebbles series and the dreamy poetic approach of Divina.

Origin: Czechoslovakia  
Offering: Lighting



PHENOMENA COLLECTION



BUOY COLLECTION





CLASSIC NO.1

## Byarums Bruk

### Byarums Bruk

Byarums Bruk is a Swedish design company that creates outdoor furniture, planters and accessories. Its creations live in parks and gardens across the Nordic region, and beyond. A deep reverence for the traditional art of foundry runs through the Byarums Bruk business. For 75 years, it has used time-honoured techniques to keep this ancient craft alive and well in its own forgery, while innovating through its use of well-considered materials such as cast aluminium, which the company has pioneered the use of since its foundation by the Bokinge brothers in 1947.

Origin: **Sweden**  
Offering: **Outdoor Furniture | Accessories**



JUJOL BENCH



JUJOL BENCH



LESSEBO



UPPSALA TABLES WITH CLASSIC NO.2 CHAIRS





## CECCOTTICOLLEZIONI

### Ceccotti Collezioni

With a philosophical and poetic approach to fine furniture making, Ceccotti Collezioni uses time and labour-intensive methods to create breathtakingly beautiful furniture with wood sourced from strictly controlled plantations. We are fortunate to have worked with the visionary Franco Ceccotti over the past decade and operate the London Ceccotti Collezioni showroom from the Design Centre, Chelsea Harbour.

Origin: Italy  
Offering: Furniture | Lighting





TERESA DINING CHAIR



STELLAGE 52



SWEET DREAMS SIDE TABLE



TWENTY TWO ARMCHAIR





JPO1 VALVES



PIET BOON CABINET 180



PIET BOON BASIN 40

## COCOON

### Cocoon

Rooted in warmth and a timeless aesthetic, Cocoon celebrates natural materials and enduring design excellence. A bespoke bathroom brand, their design portfolio includes stellar designers—including British architect John Pawson CBA and renowned Dutch design house Studio Piet Boon—alongside their in-house design team, Cocoon Lab. Utilising sustainable materials, these designers focus on creating future classics that bring comfort and encourage relaxation. The concept of ‘cocooning’ is evident in these pieces that exude soothing architectural minimalism.

Origin: **The Netherlands**  
Offering: **Bathroom**



CASSETTE SOFA & TOBO ARMCHAIRS



MOCA CHAIR & BAR CHAIR

## COLLECTOR

### Collector Group

In 2018, in the north of Portugal, a story about collecting memories started. The Collector Group designs furniture that reflects a fusion of traditional manufacturing techniques with industrial methodology. Their emphasis on creating pieces that appeal to a diverse range of contemporary lifestyles, made with the very best materials available, has resulted in a collection that feels fresh and distinctive.

Origin: **Portugal**  
Offering: **Furniture | Outdoor**





PENDULUM WALL SCONCE

## CTO LIGHTING

### CTO LIGHTING

CTO Lighting is an exclusive, luxury lighting company; celebrating contemporary design, premium materials and British craftsmanship. The designs illuminate the interiors of iconic landmarks, commercial developments, and prestigious residences around the world. The signature materials of satin brass, bronze, alabaster, mouthblown and handmade glass are combined with design influences from both nature and architecture. The handmade nature of the products results in truly unique lights, which produce a warm, ambient glow, setting a mood of sophistication and elegance.

Origin: **British**  
Offering: **Lighting**



NIMBUS PENDANT



NIMBUS WALL



AVALON CHANDELIER

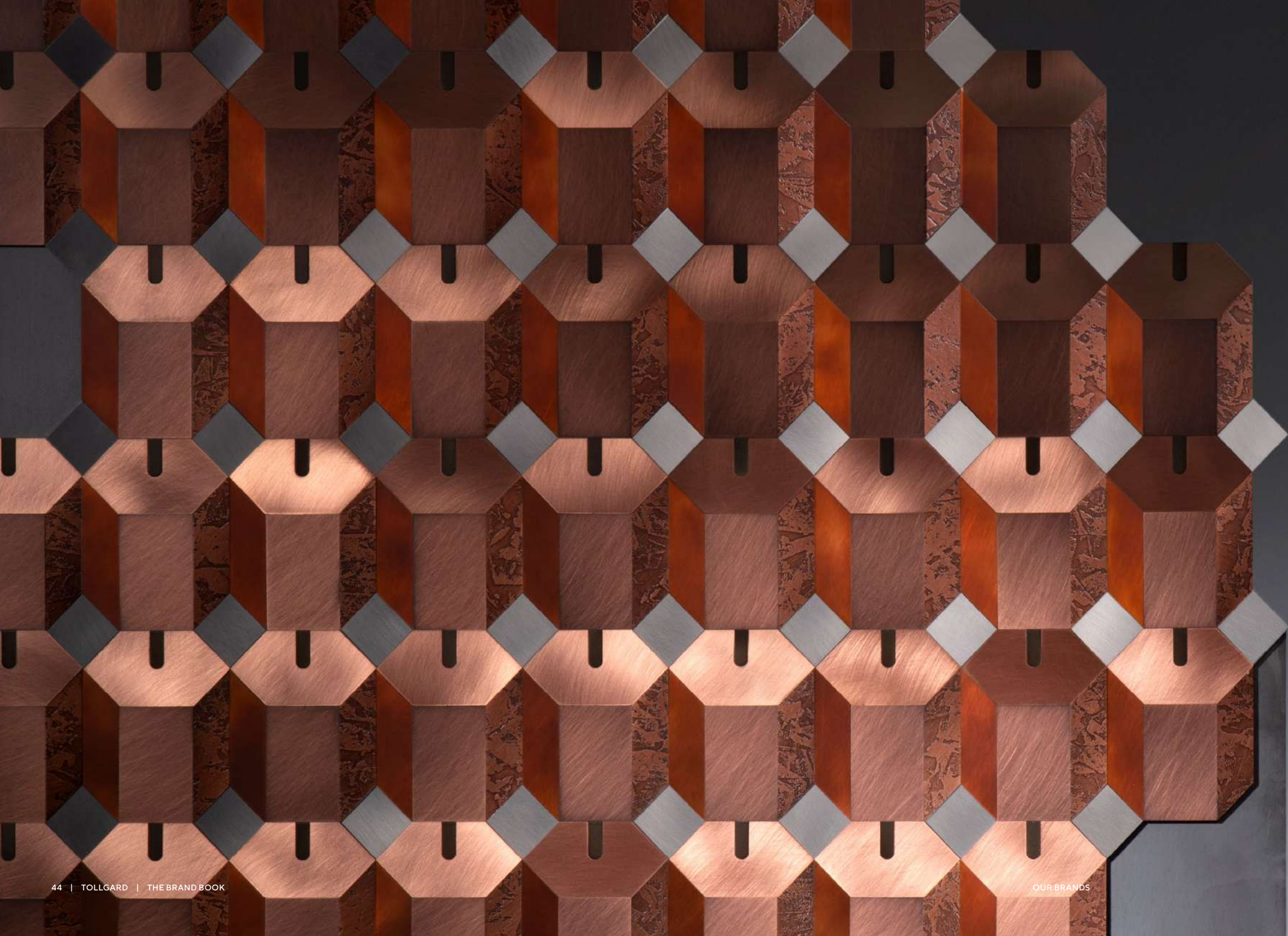


ACROPOLIS



MODULO HORIZONTAL





# DE CASTELLI

**De Castelli**  
Founded by Albino Celato, a fourth-generation blacksmith, De Castelli is an Italian firm dedicated to the art of 'hard couture'. By combining age-old techniques with advanced engineering, it pushes metal to its fullest potential, creating modern surfaces, furniture and products. The company has created its own collections of furniture and products in collaboration with some of the world's leading designers, as well as working closely with architects and designers on bespoke commissions.

Origin: Italy  
Offering: Furniture | Surfaces





PLATEAUX OF MIRROR



BRAME MIRROR



BETWEEN NATURE



SCULPT CONSOLE



DROPS



NICOLA



GELATO





CURSA LOUNGE CHAIR

## DE LA ESPADA

### De La Espada

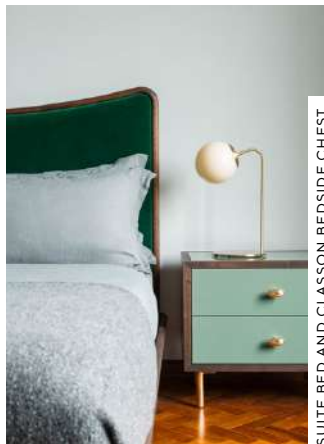
De La Espada works closely with a small number of designers developing significant, enduring partnerships. These collaborations combine leading design with the highest calibre of European craftsmanship. Each of De La Espada designer's vision extends far beyond just a chair or a bed; here, they conceive furniture for an entire home: a place to eat, rest, sleep and work. While each studio has a unique creative narrative, there is a common thread that runs through all De La Espada products, allowing for flexible combinations to achieve truly individualised interiors.

Origin: Portugal  
Offering: Furniture



ELLIOT DESK AND

PETIT 3 CHAIR



SUITE BED AND CLASSON BEDSIDE CHEST



CAPO LOUNGE CHAIR



ELYSIA ARMCHAIR





STRONG STOOLS

## DESALTO

### Desalto

Since 1990, the Orsenigo brothers have blazed a design trail. Founded on the fundamental values of harmony, expressive elegance, clean designs and originality, their mission is focused on function. Desalto's signature pieces—like the Clay table—perfectly capture their ability to create aesthetically sophisticated products that are based on ever-evolving technical and technological research. In their words, theirs is "A constantly evolving story: here, people never stop."

Origin: **Italy**  
Offering: **Furniture | Outdoor**



CALUM DINING CHAIRS



MM8 TABLE & STRONG CHAIRS





# eikund

**Eikund**  
Eikund is a furniture maker bringing forgotten classics of Norwegian mid-century design into the spotlight. Its three founders, Morten Hippe, Frode Tingbø and Jørgen Tengesdal have in common a long-held appreciation of Norwegian furniture design. Believing it to have been traditionally overlooked in favour of the better-known Danish mid-century icons, they set out together to correct this, and in 2015, Eikund was born.

Origin: Denmark  
Offering: Furniture





BROADWAY LOUNGE CHAIR



VENG ARMCHAIR



KRYSSET LOUNGE CHAIR



HERTUG DINING CHAIR



KRYSSET LOUNGE CHAIR





EDRU PENDANT LAMP DETAIL



## ENTRELACS

### Entrelacs

Raw and authentic beauty is the trademark of French lighting specialists, Entrelacs. Formed in 1982, this family foundry has grown into a global name through its exceptional bronze work, sculptural design, and exquisite detail. Brothers Yves and Paul Macheret began their journey of design young, working alongside their father to master the art of metal. Craft is part of their DNA, and each design is brought to life with the very best that nature has to offer. Today, they continue to share their father's vision with the world through a contemporary and captivating collection of lighting.

Origin: **France**  
Offering: **Furniture | Lighting**



NOMAD 295 TABLE LAMP



HUBLOT 700 PENDANT LAMP



MARTEL WALL LAMP



HUBLOT 500 WALL LAMP





## EXTETA

### Exteta

Mastering the art of Italian living, fine furniture maker Exteta works to elevate experiences for its clients with exquisite craftsmanship and expertly sourced materials. Creative director, Massimo Castagna offers an alternative perspective with unspoiled hybrid spaces, perfectly balanced interiors that seamlessly flow from inside to outside. With a palette of natural woods, precious stones, polished metals, and tactile fabrics they continue to create timeless works that live up to the illustrious moniker of 'Made in Italy.'

Origin:	Italy
Offering:	Furniture   Outdoor   Lighting Kitchens   Accessories





LEVANTE CHAIR AND GIOTTO TABLE



LPIDC01 | FOLDABLE CHAIR



SUNSET LOUNGE ARMCHAIR AND DINING TABLE



STONE ROUND COFFEE TABLE



PANAREA DORMEUSE AND ISLAND



SUNSET LOUNGE TABLE





CHIEFTAIN CHAIR



48 SOFA BENCH



TABLE BENCH



POET SOFA

## HOUSE OF FINN JUHL

### House of Finn Juhl

The 'father of Danish design', Finn Juhl became one of the leading creative figures in the mid-century and is credited with having introduced Danish design to America during the 1950s. Today, the House of Finn Juhl by OneCollection exclusively manufactures his sculptural and iconic furniture, including the celebrated Chieftain Chair. More than 40 of his classic masterpieces are crafted to the most exacting standards, with the utmost respect for their original heritage.

Origin: **Denmark**  
Offering: **Furniture**



109 CHAIR



COCKTAIL BENCH



BAKER SOFA





TESSA OUTDOOR



ICARO ROUND

## FLEXFORM

### Flexform

Made in Italy is the signature of iconic furniture maker Flexform. With their 'knowing hand' they bring to life discreetly sophisticated sofas that are globally recognised for their luxurious warmth and lightweight softness. Crafted in Meda, Northern Italy with a legacy of inspiration and expertise, these items respect the architecture of a space. With a strong portfolio of original contemporary designs, Flexform is found in discerning homes as well as prestigious hotels, yachts and restaurants across the globe.

Origin: **Italy**  
Offering: **Furniture**



ALISON



GROUNDPIECE SOFA





BARDOT STOOL

## GABRIEL SCOTT

### Gabriel Scott

Gabriel Scott is the brainchild of brothers-in-law Gabriel Kakon and Scott Richler, both experienced in industrial design, architecture and jewellery making. Since 2004, they have made their name bringing their myriad talents to bear on a line of custom-made furniture and lighting pieces. Scott is now at the helm, designing pieces for the world's most prestigious flagship stores, celebrated restaurants, and desirable private residences.

Origin: **Canada**  
Offering: **Lighting | Furniture**



HARLOW DRIED FLOWERS



BRIOLETTE SMALL PENDANT



LUNA CHANDELIER



MYRIAD LONG CHANDELIER





HUMBLE SOFA DETAIL

# gemla

**Gemla**  
Sweden's oldest furniture maker, Gemla, confidently presents a collection of furniture that feels rooted in tradition but not trapped by it. Their workshop can be found in the small village of Diö by the river Helgeå, surrounded by beech forests. Inside, they have spent the last 160 years learning the language of wood, refining their craft and their mastery of it. From elegant armchairs to hockey sticks and tennis rackets, their portfolio can simply be defined as evocative, timeless, and beautifully made.

Origin: **Sweden**  
Offering: **Furniture**



GEMLA OPEN



HUMBLE ARMCHAIR



STAM TABLE WITH VILDA DINING CHAIR



STILLA DINING TABLE WITH VILDA DINING CHAIR





BOLLE FROSTED

## Giopato & Coombes

### Giopatto and Coombes

Founded by Italian-English duo Cristiana Giopato and Christopher Coombes, Giopato & Coombes is a lighting design company founded in 2014 that fuses the finest Italian craftsmanship with cutting-edge technological advances. Passionate innovators who are pushing the boundaries of lighting design, Giopato & Coombes' work is informed by Murano's rich glass-blowing heritage but looks ahead to the future through its discreet and intelligent use of modern technology.

Origin: **Italy**  
Offering: **Lighting**



BOLLE TRANSPARENT



SOFTSPOT



GIOIELLI WALL LIGHT



GEM SUSPENSION LAMP





JANET ARMCHAIR

# GIORGETTI

**Giorgetti**  
 Since 1898, Giorgetti has been crafting furniture collections of the very finest quality from its home in Brianza, Italy. It has since grown to become one of the most revered names in fine furniture design; with pieces instantly recognisable all over the world for their distinctive style. For more than 120 years, Giorgetti has set the standard for the art of woodworking. Producing sublime contemporary furniture, shaped from the most beautiful cuts of wood and crafted by highly skilled woodworkers celebrating heritage and innovation.

Origin: **Italy**  
 Offering: **Furniture | Lighting**



ODE BARSTOOLS



GEA ARMCHAIR



LOOP ARMCHAIR



ELISA DINING CHAIR AND GORDON ROUND TABLE





## HENGE®

### Henge

Unique pieces are the love language of Italian atelier Henge. Artistic director Massimo Castagna brings together the renowned creative talents of Ugo Cacciatori and Yabu Pushelberg to create a collection of furniture, accessories and lighting that is truly mesmerising. The natural materials they use to create these organic sculptures are as globally diverse as the schemes they finally inhabit.

Origin: Italy  
Offering: Furniture | Lighting | Accessories





ZENITH TABLE STONE



TEST-TWO



TEST-ONE



SAVANNA



SUPERB-ALL



DOWNTOWN SOFA



MONOLITH TABLE





# INDIGENUS

**Indigenus**  
Founded by South African Peter Van Der Post, Indigenus crafts a unique collection of architectural pots and planters; sculptural pieces of outdoor art that have the power to transform gardens, rooftops, and terraces. Each of Indigenus' creations is meticulously crafted. Their smooth, clean lines are drawn from raw, honest materials of hardwood, cork, and concrete. A recognisable aesthetic runs through each collection. Strikingly pared-back, understated and restrained designs feature bold, simple silhouettes contrasted by tactility and earthiness.

Origin: South Africa  
Offering: Outdoor Accessories





AARDE



BHACA



AARDE



TUBER



TUBER





## JUNIPER®

**Juniper**  
Based in New York, Juniper is an award-winning, fully integrated manufacturing and design studio dedicated to creating upscale, architectural lighting for homes, offices, and hospitality spaces. With an unwavering belief in the transformative power of good design, Juniper creates lighting designs that are strikingly simple aesthetically, yet are integrated with innovative, problem-solving technology. Meticulous engineering and considered design is concealed within beautifully crafted natural materials.

Origin: USA  
Offering: Lighting





AXIS



MULTIVERSE



METROPOLIS WALL-TO-WALL



THIN SYSTEM



THIN SYSTEM



METROPOLIS





501 ALOUETTE CHAIR

KØBENHAVNS-MØBELSNEDKERI

**KBH**  
KBH—Københavns Møbelsnedkeri—is a Copenhagen-based company committed to the craft of handmade interiors. Since 2006, it has produced furniture, kitchens, wardrobes and bathrooms for both private and corporate customers the world over. From concept to completion, every single product is designed and made in Copenhagen by hand. KBH’s products are recognisable for their timeless beauty; a finely balanced interplay between colours, materials and tactility.

Origin: **Denmark**  
Offering: **Furniture | Lighting**



KBH SOFA



BODIL KJAER OFFICE DESK



AIDA LAMP

Karakter

**Karakter**  
Karakter Copenhagen is a Danish design brand specialising in the production of furniture and lighting by design icons of the past, present and future. With an uncompromising commitment to quality and finish with a focus on enduring, timeless design—the brand draws together a collection of beautifully crafted forever pieces. Icons of 20th-century like Joe Colombo, Angelo Mangiarotti and Achille Castiglioni are celebrated alongside promising new design talents like Laura Straßer, Aldo Bakker and Anatomy Design.

Origin: **Denmark**  
Offering: **Furniture | Lighting | Accessories**





INTERSECTION CHAIR AND DINING TABLE

## LA MANUFACTURE

### La Manufacture

The worlds of French style and Italian craft collide at La Manufacture. With art director Luca Ninchetto at the helm, this multi-disciplinary brand brings to light the best of both realms. Delectable designs of furniture, lighting, and accessories, rich in colour and character. La Manufacture brings together the best designers from across the globe with a design manifesto that seeks to find the *je ne sais quoi* in everything from furniture to fashion.

Origin: **France**  
Offering: **Furniture | Accessories**



OAZE SOFA



CONSTELLATION | FLOR LAMP



CONSTELLATION | CASSIOPEA CEILING SCONCE



CRYSTAL ROCK

## LASVIT

### Lasvit

Founded by Leon Jakimič, a sixth-generation glassmaker, Lasvit is a Czech business that fuses traditional Bohemian glassmaking techniques with cutting-edge technology and contemporary design to create extraordinary experiences in light. With a deeply held reverence for the glassmaking traditions of Bohemia and generations of his family before him, Leon Jakimič brings a modern approach to his work. Passionate about innovation, he brings together cutting-edge technology with the know-how of highly skilled craftspeople. The result is a breath-taking repertoire of lighting installations and fixtures alongside a range of stunning home decor.

Origin: **Czech Republic**  
Offering: **Lighting | Accessories**





## LINTELLOO

### Linteloo

Linteloo was founded by Dutch designer Jan te Lintelo in 1993, inspired by 'the feel-good factor', sofas and chairs that were inherently comfortable and relaxed. Each piece of Linteloo furniture is unique, exceptionally designed and painstakingly crafted. Yet the Linteloo collections are united by their shared appreciation of easy living. Relaxed silhouettes are finished in crumpled linens with sink-in softness, and just the right balance is struck between comfort and structured support.

Origin: The Netherlands  
Offering: Furniture | Lighting





BOLD ISLAND SOFA



CUBO FLOOR LAMP



TILT ARMCHAIR AND OTTOMAN



OISEAU DINING CHAIR AND TABLE



CERVINO ARMCHAIR



ARP SOFA WITH ISOLA COFFEE TABLE





# LUTECA

FURNITURE

**Luteca**  
Beautifully embracing the rich heritage of Latin America and Mexico, Luteca specialises in contemporary and modernist design. Founded in New York, 2015 by Amanda Réant, Sebastian Réant and industrial designer Alexander Diaz Andersson, the brand is the first to showcase timeless and handcrafted Mexican design to an international audience. Sustainably produced in Mexico with talented craftsmen, artisan techniques and natural materials, these pieces radiate an architectural warmth that captures the senses.

Origin: **USA & Mexico**  
Offering: **Furniture | Outdoor Furniture**





DORCIA DAYBED



OCO SIDE TABLE



EUGENIO DINING CHAIR



WOVEN CREDENZA



LINE LOUNGE CHAIR



CP003 COFFEE TABLE





MG211 | TABLE



#### Malte Gormsen Kollektion

Honouring the beauty of Denmark's plentiful forests, Malte Gormsen started his eponymous company with an aim to bring to life cabinetry and furniture that stands the test of time. From his workshop in Herlev just outside Copenhagen, Malte's team meticulously sources each piece of wood to imbue a sense of spirit. From exquisite furniture and intricate accessories, their portfolio of future heirlooms is a wonder to behold.

Origin: **Denmark**  
Offering: **Furniture | Accessories**



MG210 | DINING TABLE



MG101 | DINING CHAIR



MG102 | BAR STOOL



MG406 | SIDE TABLE





CASCADIA PENDANTS



MATTHEW McCORMICK

**Matthew McCormick**  
 Founded in 2013 by Canadian Matthew McCormick, the studio designs and manufactures a distinctive collection of lighting and artistic installations. They achieve a fine balance between traditional hand-crafting techniques and modern technology, producing a collection of chandeliers and pendants that marry supreme functionality with an elegant, striking design. Sculptural forms are realised in precious metals and blown glass, imbuing each piece with an air of refinement and a creative art-like quality.

Origin: **Canada**  
 Offering: **Lighting**



CASCADIA PENDANTS



HALO PENDANT



MILA PENDANT



LABRASCONCE





# MERNØE

**Mernøe**  
Carefully crafted lighting with a contemporary edge, Mernøe is a family business based in Copenhagen. Each of their hand-made pieces is created with the finest wood, brass and glass. They aim to emphasize the natural beauty of these materials whilst creating innovative and exciting modern sculptures. From desirable private residences to grand public spaces, Mernøe's work inspires and engages.

Origin: **Denmark**  
Offering: **Lighting**



NO.1, SIPO MAHOGANY



GOGAN SOFA



PAPER PLANES ARMCHAIR

# MOROSO<sup>™</sup> the beauty of design

**Moroso**  
Since its foundation in 1952, Moroso has been a family run business that brings together the finest Italian furniture-making with some of the world's leading names in architecture and design. The cornerstone of the brand since its inception has been the manufacture of beautifully elegant, luxurious sofas and seating. With decades of experience, Moroso has honed its craft to unmatched levels and today produces some of the finest quality furniture in the world.

Origin: **Italy**  
Offering: **Furniture**





## MAN OF PARTS

### Man of Parts

Founded by design aficionado Stephan Weishaupt, Man of Parts intends to reflect the attitudes of its customers: global citizens for whom travel and exploration is a way of life. Hailing from Munich and a long line of craftspeople, entrepreneurs, architects and artists, Stephan's philosophy centres around the notion that we need few items but what we do have should be beautifully made and enhance the way we live. In collaboration with a close group of design partners, he has created a capsule collection of seating, tables, lighting, and accessories to improve time spent at home.

Origin: Canada  
Offering: Furniture | Lighting | Accessories





SAVIGNYPLATZ DINING



VIA DEL CORSO



JINBAO STREET



PARK PLACE STOOL





SYLVIE DINING CHAIR

# MERIDIANI

**Meridiani**  
 Meridiani's collections are characterised by their timelessness; informed by the past, they interpret the demands of contemporary lifestyles to create eminently liveable furnishings for today. Unique to Meridiani is its unparalleled collection of textiles; Meridiani designs and manufactures its own range of exquisite fabrics in the finest natural materials: linen, cotton, velvet, and chenille. Hand-crafted furniture for the living room, bedroom, dining area, library and outdoors is all made entirely in Italy. These exceptional pieces of design are the future heirlooms of generations to come.

Origin: **Italy**  
 Offering: **Furniture**



ISETTA CHAIR



TIMOTHY SOFA





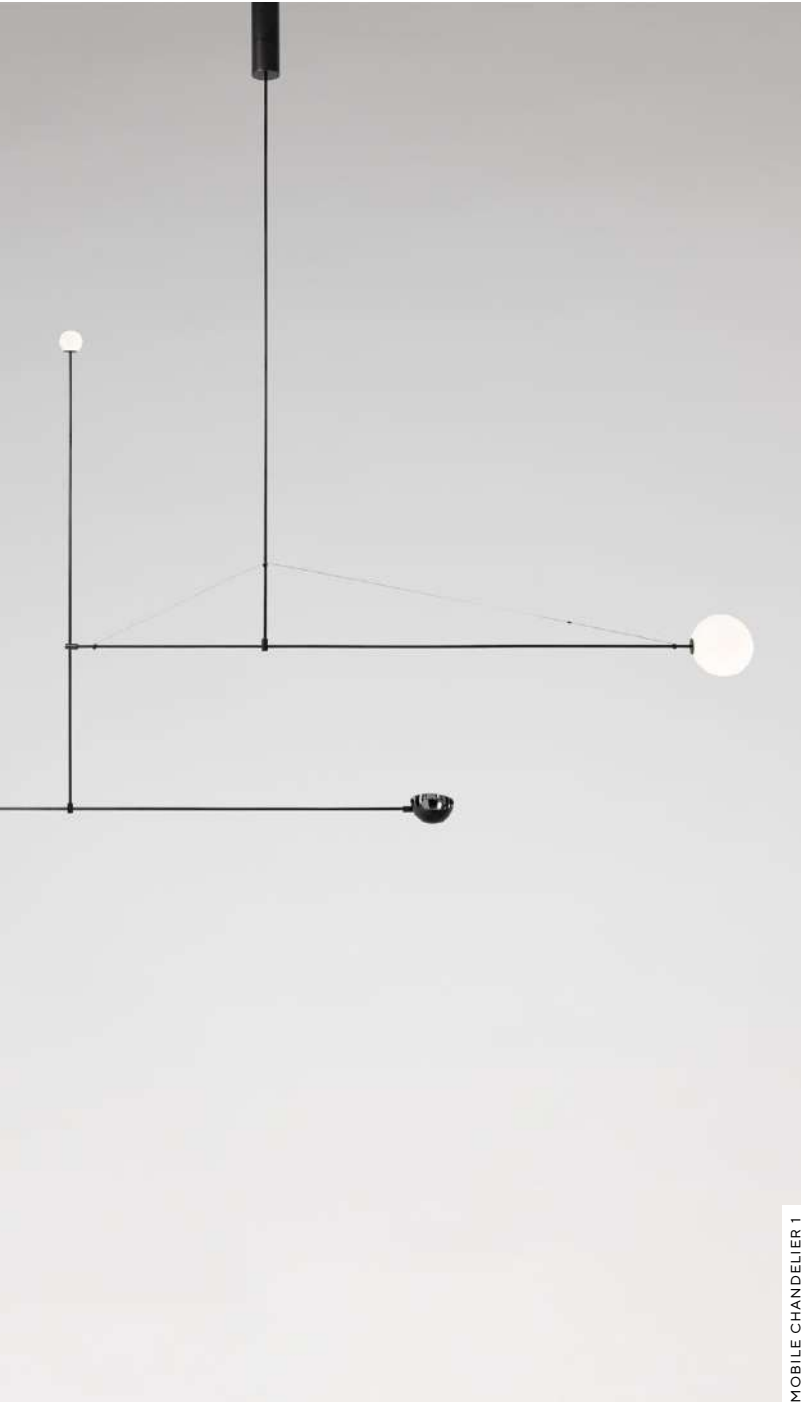
WHITE PORCELAIN D2



HAPPY TOGETHER PENDANT



BALL LIGHT



MOBILE CHANDELIER 1

MICHAEL ANASTASSIADES

**Michael Anastassiades**  
Michael Anastassiades is a London-based company specialising in the design and manufacturing of high-quality lighting and objects. Positioned between fine art and design, Michael's work aims to provoke dialogue, participation and interaction. He creates objects that are minimal, utilitarian and almost mundane, yet full of a vitality one might not expect. His designs are hand-made by family-run workshops, selected for their unique manufacturing skills and traditional use of materials, in line with Michael's philosophy to produce exceptionally designed objects of permanent value.

Origin: United Kingdom  
Offering: Lighting



GET SET



BALL VASE





YOELL ARMCHAIR & 505 UP SYSTEM

# Molteni & C

**Molteni & C**  
 Since its inception in 1934, some of the most celebrated names in design have worked with Molteni & C to create its collections, including Werner Blaser, Afra and Tobia Scarpa, Gio Ponti and Patricia Urquiola. Today, under the creative directorship of Belgian architect and designer Vincent van Duysen, the brand continues to be a leading industry name and a byword for quality Italian furniture. Its collections include both heritage and contemporary pieces. Their textile collections include designs by Marta Ferri, and furniture ranging from seating and dining tables to walk-in closets and home offices.

Origin: **Italy**  
 Offering: **Furniture**



BLEVO DINING TABLE



DEVON STOOL



D.156.3 ARMCHAIR



CAMDEN HIGH BACK SOFA



AVA DINING TABLE & CHELSEA DINING CHAIR





PARLIAMENT

## NEMO

### Nemo

Since its foundation in 1993 by Franco Cassina, Nemo has earned a global reputation for manufacturing iconic lighting. From its base in Milan, Nemo reproduces lighting by some of the 20th-century's most innovative and celebrated designers, from Le Corbusier to Kazuhide Takahama. Through collaboration with contemporary designers, the company seeks to develop the future lighting icons of tomorrow. From the likes of Mario Bellini, Jean Nouvel and Andrea Branzi to Bernhard Osann and Arihiro Miyake.

Origin: **Italy**  
Offering: **Lighting**



MINI POTENCE PIVOTANTE



ZIRKOL SUSPENSION LAMP





MITO LINEAR PENDANTS

# Occhio

**Occhio**  
 Self-taught lighting designer Axel Meise founded Occhio in 1999 in his native Munich. His vision was to enable others to design their own homes: to democratise the design process. His belief is that good lighting delivers a good quality of life, and he has dedicated himself to pioneering new and better ways of lighting the spaces we live in. Occhio’s signature is modular lighting systems. Simply and consistently designed, they connect spaces and enable uniform lighting designs to be used throughout entire buildings, creating a sense of openness and flow.

Origin: **Germany**  
 Offering: **Lighting**



MITO SOSPESO





MAXX



FRANK DINER

# OKHA

**OKHA**  
Hailing from Cape Town, OKHA is a brand that embodies South Africa's artisanal history and unrivalled beauty. Founder Adam Court sees each piece he creates as blurring the line between art and design. Collaborating with South Africa's finest artists and artisans, OKHA turns to organic materials—brass, leather, copper, timber, wool, marble and stone - to yield graceful forms: contemporary furniture that respects the natural world and speaks of traditional craftsmanship.

Origin: **South Africa**  
Offering: **Furniture**



REPOSE SOFA



TETRA



COUNCIL CHAIR



TIME CHAIR

# ONECOLLECTION

**OneCollection**  
OneCollection was founded over 30 years ago by Ivan Hansen and Henrik Sørensen. Since 1990, the business has collaborated with some of the most promising contemporary designers to manufacture quality furniture using the most skilled techniques. In 2001, OneCollection was trusted with the exclusive rights to manufacture and re-launch the repertoire of Finn Juhl's sculptural and iconic furniture.

Origin: **Denmark**  
Offering: **Furniture**





WIRE BAR STOOL

OVERGAARD & DYRMAN

**Overgaard & Dyrman**  
Founded by friends in 2013, Overgaard & Dyrman is a contemporary design studio and furniture maker based in Denmark. Taking the best from past and present, the studio marries traditional techniques with modern technologies to craft organic shapes in luxury materials. Often informed by geometry and the forms found in nature, Overgaard & Dyrman's collection of seating and tables is crafted by skilled artisans in Denmark, with a quality and attention to detail that is intended to inspire and delight.

Origin: **Denmark**  
Offering: **Furniture**



CIRCLE DINING CHAIR



WIRE DINING CHAIR



WIRE LOUNGE SOFA



WIRE COFFEE TABLE





## PIETBOON

**Piet Boon**  
The Piet Boon Collection offers authentic signature pieces that embody the design philosophy and essence of the company: functional, comfortable, and timeless design. Each piece is passionately crafted with rich natural materials, attention to detail and refined taste, bearing both aesthetics and intensive use in mind. The collection's products are known for their innovative design, sophisticated and everlasting appeal, generous proportions, functional use and extraordinary comfort.

Origin: The Netherlands  
Offering: Furniture





LARS COUCH



BOB ARMCHAIR



RENS SOFA



LARS ARMCHAIR



ELLA ARMCHAIR



KOBE COFFEE TABLE





ILARY MONOLITHIC COFFEE TABLE



TIME LOUNGE ARMCHAIR



DUO SOFA



**Poltrona Frau**  
New to the Tollgard showroom are Poltrona Frau. Creating understated and elegant objects inspired by tradition and projected into the future to provide global living solutions. With over 110 years of heritage, Poltrona Frau is a beautiful blend of creativity, craftsmanship and technology, specialising in some of the finest materials, including leather.

Origin: **Italy**  
Offering: **Furniture | Accessories**



DUO BENCH



OUR BRANDS



DUO LOUNGE ARMCHAIR





EKERÖ COFFEE TABLE

porada

**Porada**  
A byword for Italian excellence, Porada is rooted in materiality. Born in 1948 from a love of wood, their design language encompasses the finest walnut, ash, and oak alongside precious stones, oxidised metals, and lacquered elements. Their product portfolio is a showcase of refined elegance; their strength stemming from a human factor that lies beyond machinery and materials. The most recent collection by Tollgård & Castellani is rooted in the belief that great furniture design is like sculpture for the home.

Origin: Italy  
Offering: Furniture | Lighting



SERENA DINING CHAIR



EKERÖ MIRROR



EKERÖ RACK



ASTRA SUSPENSION LAMP





PP225 THE FLAG HALYARD CHAIR



**PP Møbler**

Family owned and established in 1953, PP Møbler has dedicated itself to the production of the very finest quality furniture for the past 68 years. With a deep-rooted love of wood and a firm belief that technique, ingenuity and craftsmanship can exist side-by-side, PP Møbler uses traditional woodworking techniques and expertise to breathe life into the designs of some of the world's most influential talents, including Hans Wegner, Thomas Alken, Søren Ulrik Petersen, Zaha Hadid and Jørgen Høj.

Origin: **Denmark**  
Offering: **Furniture**



PP501 THE CHAIR



SPY CHANDELIER



LUM WALL-LAMP



**Quasar Holland**

Dutch masters of light, Quasar Holland was founded by Teun van Gammeren in 1992. Today, the company is led by his sons Arjens & John who continue to work with renowned designers around the globe including Jan Pauwels, Ralph Frickel, Edward van Vliet and Malika Novi. A showcase of the best contemporary lighting, their collection includes timeless designs that are effortlessly modern. Intricate and illuminating structures make up the brand's distinctive signature.

Origin: **The Netherlands**  
Offering: **Lighting**





**RBW**  
RBW is an award-winning, Brooklyn-based, independent design and manufacturing studio that believes in the ability of light to shape and enhance our sense of well-being. With a collection of luminaires that includes ceiling pendants, chandeliers and flush fixtures, wall sconces and outdoor solutions, RBW is helping to bring warm, energy-efficient LED lighting to more public and private spaces all over the world.

Origin: **USA**  
Offering: **Lighting**





LATIS SQUARE



HOIST PENDANT



CRISP SCÖNCE



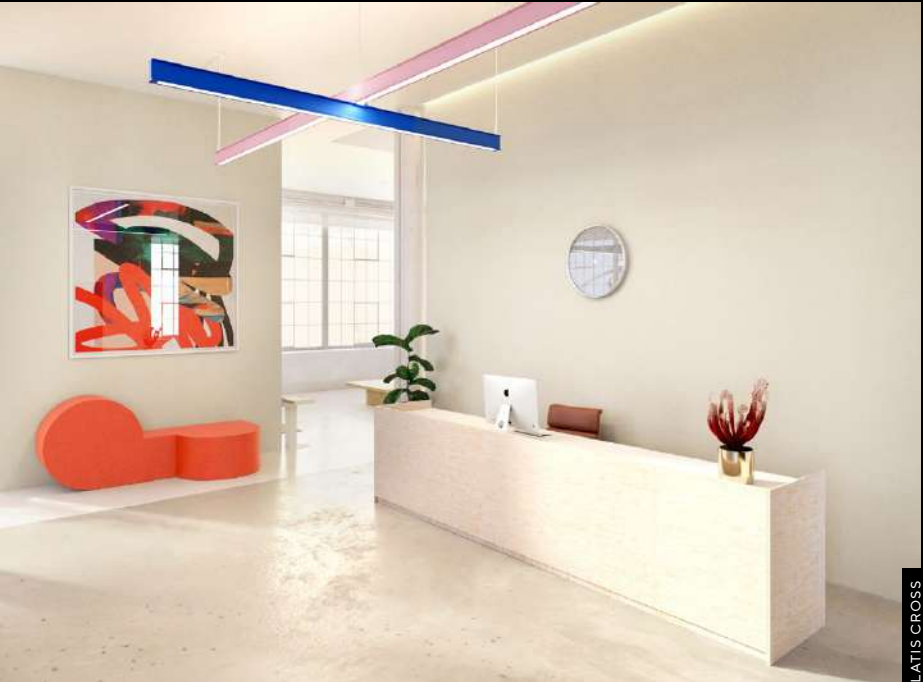
ALLSEW, GALA 42" & 72"



HOIST SCÖNCE



PASTILLE3 VANITY & CLUSTER



LATIS CROSS





PORT WALL LIGHT



HARU & SO TABLE LAMP



PORT WALL LIGHT

## Rakumba

**Rakumba**  
Australia's oldest international lighting brand, Rakumba is a committed group of thinkers, designers, makers, artisans and engineers devoted to its mantra, "Making Beauty". Combining contemporary design, artisan craft, complex manufacturing and leading-edge technology, Rakumba delivers unique lighting designs for the home with a seemingly effortless complexity. Rakumba's family of lighting designers includes Studio Truly Truly, Sebastian Herkner and Nikolai Kotlarczyk.

Origin: **Australia**  
Offering: **Lighting**



BELL WALL LIGHT





PIER BARSTOOL

# Resident

**Resident**  
 Founded by Simon James & Scott Bridgens in 2011, Resident is a New Zealand-based collection offering furniture and lighting that is rooted in innovation and sustainability. They form part of the 'New World Luxury' movement, a collection of brands from the Southern Hemisphere rooted in sustainable design. They focus on pieces that are made to last and enhance every day, a departure from the material attitudes of the past. Seamlessly working across high-end residential and commercial projects, Resident's portfolio offers quiet refinement and a contemporary edge.

Origin: **New Zealand**  
 Offering: **Furniture | Lighting**



OFFSET DINING TABLE AND STOOL



OPEN KITCHEN



ANTIBES LOUNGE CHAIR

# RÖSHULTS

**Röshults**  
 Röshults is a Swedish design brand that specialises in outdoor living: stylish, contemporary, high-quality kitchens and furniture that embrace the great outdoors. Röshults' story began with a single product: a fire basket built by one of the founders' fathers, Anders Norgren, for his own cottage in Röshults, Småland. It inspired a complete collection of outdoor designs that embrace the Swedish idea of 'the good life'. Well-made, timeless, architectural design that connects families and friends to the spaces around them.

Origin: **Denmark**  
 Offering: **Outdoor Furniture | Kitchens**





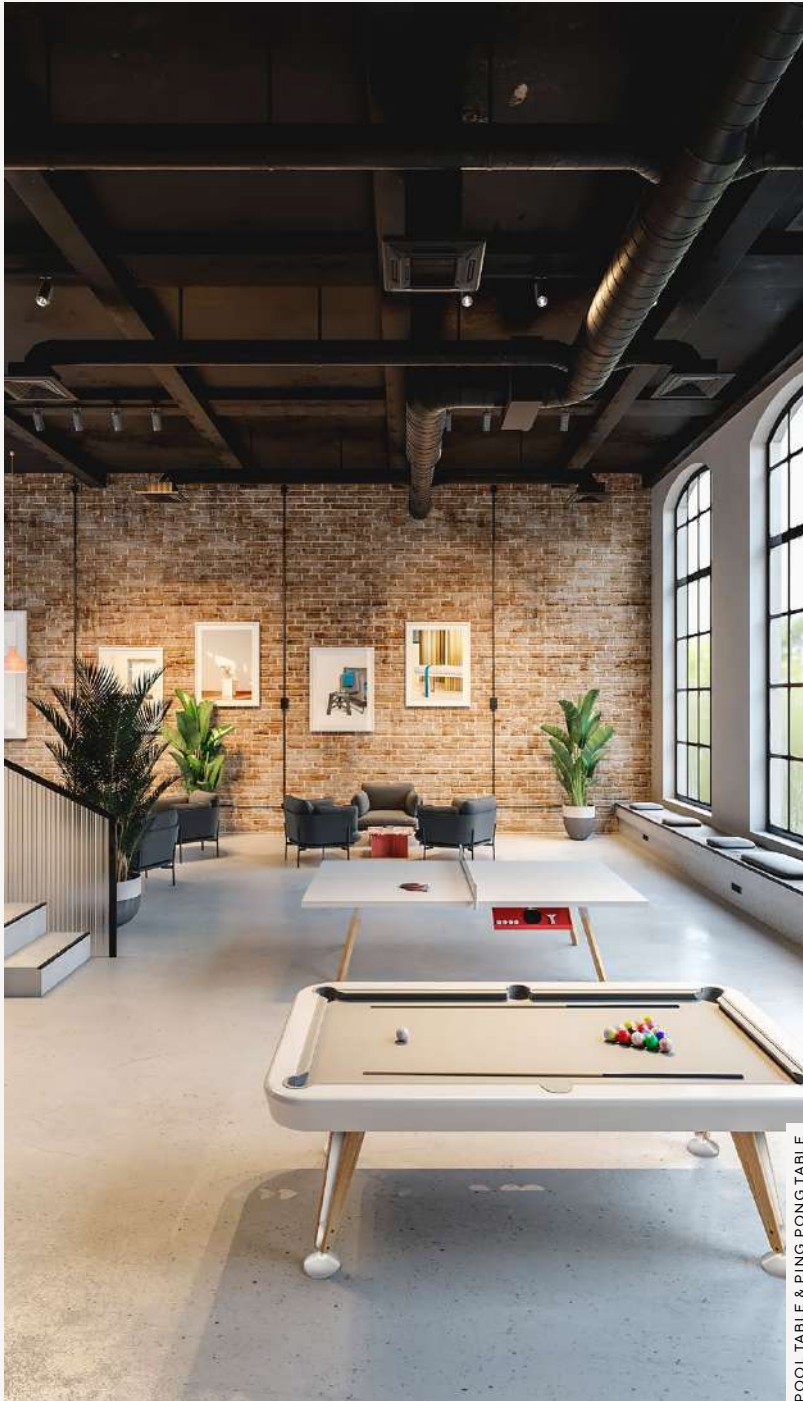
FOOTBALL TABLE

## rs barcelona

### RS Barcelona

Born from Barcelona, and echoing its zest for life, RS Barcelona's mission is to create products that add joy and optimism. Their pieces work as hard as they play: from football to ping pong to pool tables, from inside to outside. There's a story of casual luxury: of living life to the full by spending time with friends and family, enjoying each moment. They manufacture locally, with a strong focus on sustainability and local materials.

Origin: **Spain**  
Offering: **Game Tables**



POOL TABLE & PING PONG TABLE



VEER PENDANT



TWIN 2.0

## SkLO

### SkLO

SkLO is a celebration of the traditional art of Czech glassblowing, made modern. Its name, which is Czech for 'glass', is symbolic of the brand's philosophy: simplicity, restraint, and a deep focus on its craft. Designed and made between California and the Czech Republic, SkLO's designs are distinctly modern, eschewing ostentatious or aesthetic embellishment in favour of understated simplicity. SkLO's mantra is to find the purest expression of an idea, and to realise it through extraordinary workmanship.

Origin: **USA & Czech Republic**  
Offering: **Lighting | Accessories**





# skram

**Skram**  
Skram describes its furniture, lighting and accessories as a 'distillation of the essential', working in sustainably sourced North American hardwood and other natural materials such as metal, veneer, leather and stone. Its collections are restrained, minimal and elegant. In the making process, natural imperfections in the raw materials are cherished and preserved to distil a sense of individual character to each piece; the beauty of the natural world is brought together with extraordinary precision and artisanal craftsmanship.

Origin: USA  
Offering: Furniture | Lighting | Accessories





PIEDMONT PEDESTAL TABLE



PIEDMONT 3-DRAWER CONSOLE



PIEDMONT #2 DINING STOOLS



SADDLESTOOL





CUSTOMISED FURNITURE



CUSTOMISED TABLES

## SYSTEM 180

**System 180**  
System 180 furniture is a Berlin-based design and manufacturing studio that produces well-made, functional furniture for modern workplaces and lifestyles. In an era where our working and home lives have never been more closely intertwined, System 180 creates solutions in line with its philosophy of 'functional honesty'—function comes first, and design emerges from function. Smart design, the use of high-quality materials and solid construction result in robust and lasting furniture that truly fulfils its purpose.

Origin: **Germany**  
Offering: **Workspace Furniture**



CREATIVE SYSTEMS



STORAGE SYSTEMS





DOLMEN COFFEE TABLE



**Tacchini**  
Rooted in the magic of an idea, the family of Italian furniture makers Tacchini have a long-standing history of connecting objects to the essence of living. They are focused on storytelling with creativity and authenticity as their language of design. Soft and enveloping organic shapes perfectly balance simplicity and grandeur. Bold details and sculptural accents help to inject a sense of perspective and engagement into commercial spaces.

Origin: Italy  
Offering: Furniture | Accessories



JULEP SOFA & JOAQUIM COFFEE TABLE



KANJI COFFEE TABLE



TRAMPOLINO SIDE TABLE



FIVE TO NINE DAYBED





989 LOUNGE CHAIR

## tc thayer coggin

**Thayer Coggin**  
 Since its foundation in 1953, Thayer Coggin has manufactured some of the world's finest upholstered furniture, with a way of working that is unique within the furniture-making industry. Each piece of Thayer Coggin furniture is made by hand, from start to finish, by a single craftsman. This obsessive level of control is what ensures the unmatched quality and durability of Thayer Coggin's furniture, and what sets it apart.

Origin: **USA**  
 Offering: **Furniture**



DROP IN CHAIR



CRUISIN'



ARROW ARMCHAIR



BOTAN NO HANA

## TIME & STYLE

**Time & Style**  
 'Monozukuri' is a Japanese term that signifies technical prowess or know-how. It captures the spirit of Japan's manufacturing processes that have been handed down from generation to generation. This preservation of traditional Japanese artisanship is at the heart of Time & Style, a design business that marries modern lifestyles with the traditional aesthetics of Japan, employing skilled craftspeople in its native Japan to bring its collections of furniture, lighting, tableware and accessories to the rest of the world.

Origin: **Japan**  
 Offering: **Furniture | Lighting | Accessories**





DIEGO COLLECTION



WARREN LOUNGE

## TOKEN

### Token

New York-based Will Kavesh and Nicole Cornell founded Token in 2007. Informed by Will's background as a sculptor, painter, and engineer, the studio creates modern American furniture that is meticulously crafted with unwavering attention to detail. American hardwood, intricate marquetry veneer patterns and studio-machined hardware are expertly handled to produce casework, tables and seating that bear an unmistakable aesthetic. Token's work is a celebration of hardwood, with strikingly modernist designs in sculptural forms balancing beautifully with the wood's eye-catching grains and hues.

Origin: **USA**  
Offering: **Furniture**



WARREN LOUNGE



LOUISE SOFA



MAZER CREDENZA



MAZER TABLE, MARBLE



MAZER CHAIR

## TOMFEREDAY

### Tom Fereday

Fascinated by the tension that lies between natural materials and contemporary design and manufacture, Tom Fereday develops unique designs originating from an intrinsic inquiry into the role of objects today. Built on the principle of honest design Tom Fereday's work celebrates the materials and craft behind furniture and objects, guiding considered and thoughtful design outcomes that explore the notion of quiet innovation.

Origin: **Australia & UK**  
Offering: **Furniture | Lighting | Accessories**





ABI BAR STOOL



KOPS OVAL TABLE



KITALE CHAIR



BRACCI CHAIR

# VAN ROSSUM

EST. 1978

**Van Rossum**  
This Dutch furniture-making studio specialises in the use of French oak. Working entirely by hand, Van Rossum's master craftspeople produce furniture that celebrates this ancient and beautiful material. Armed with a deep understanding of the unique structures and tannins of each piece of wood, they create furniture that brings out the individual character of the oak. Seating, tables, sideboards, and shelving are sculptural and exquisitely textured. Creating striking, simple pieces with elegance and integrity that last a lifetime and beyond.

Origin: **The Netherlands**  
Offering: **Furniture**



STONE TABLE

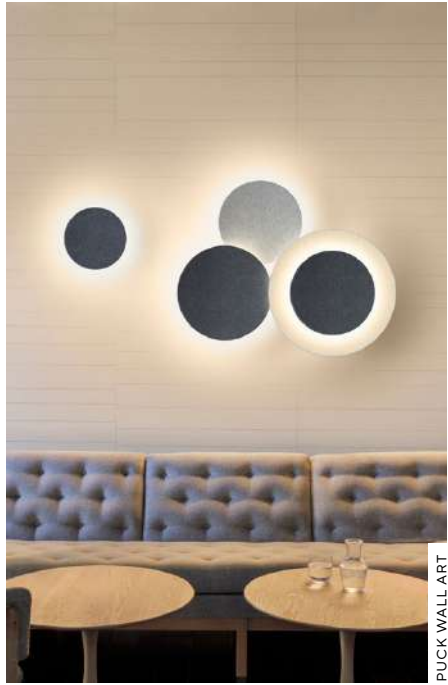


ABI CHAIR



DINING TABLE ONE





PUCK WALL ART

# VIBIA

**Vibia**  
Vibia is an ecosystem: a collection of intelligently conceived, thoughtful lighting designs that enable designers and architects to enhance the spaces they create. Inviting designers to collaborate side-by-side, Vibia ensures that its lighting solutions meet the needs of every scenario and space. The highest quality materials work in combination with innovative technologies to enhance the way we live: smart dimming control, connectivity and cutting-edge electronics allow Vibia to keep up with new cultural habits and lifestyles.

Origin: **Spain**  
Offering: **Lighting**



WIREFLOW



STICKS



STICKS



DOTS





vipp

Vipp  
A byword for the best in Danish industrial design, the world of Vipp presents a vast and exciting contemporary collection. Rooted in functionality, Founder and skilled metal smith Holger Nielsen's first creation was the most practical of objects: a compact, pedal-controlled bin. It would prove to be the first step on their road to a more functional world, filled with beautiful and industrial objects. Today, the Vipp library includes elegantly minimal furniture, lighting, kitchens, and accessories. From exquisite furniture and intricate accessories, their portfolio of future heirlooms is a wonder to behold.

Origin: Denmark  
Offering: Furniture | Accessories  
Kitchen | Lighting





V3 | KITCHEN



V3 | KITCHEN DETAILS



VIPP526 | SCONCE



VIPP655 | POUF



LOFT | SOFA



VIPP452 | SWIVEL CHAIR





ANDES TABLE



VUELTA ARMCHAIR 80 & LEATHER SIDE TABLE



**Wittmann**  
“Our inspiration is global, our outlook optimistic and our style eclectic.” The words of Ulrike Wittmann capture the signature approach of Wittman as they celebrate their fifth generation of creating treasured pieces through an uncompromising approach to craft and design. A family business since 1896, with production exclusively in Etsdorf, Lower Austria, Wittmann has always collaborated with the greatest design names of their time, creating milestones in the history of furniture design.

Origin: **Austria**  
Offering: **Furniture | Outdoor**



PARADISE BIRD FULLBACK COLLECTION



FLAMINGO SOFA



NENA DINING CHAIR

**zanotta:**

**Zanotta**  
Zanotta’s vision far exceeded the largely utilitarian scope of local upholsterers. Beyond its surface functionality, he recognized in furniture design a new form of cultural expression—a venerable creative outlet worthy of the same respect afforded to traditional artistic exploits like painting and sculpture. Bolstered by instinct, charisma, and a natural interest in emerging materials and technologies, his unique and, at the time, revolutionary path brought Zanotta into contact with some of the now legendary icons of Italian design.

Origin: **Italy**  
Offering: **Furniture | Accessories**



T O L L G A R D

ACCESSORIES





**AK47**  
Born by fire and a love of the great outdoors, AK47 Design specialises in outdoor fire pits and accessories that combine simplicity and style. With quality as its main strength, these designs aspire to become part of their landscape, working in true harmony with their settings. These masterpieces are made in Italy but complete outdoor spaces around the globe.

Origin: **Italy**  
Offering: **Outdoor Firepits**



**Anna Torfs**  
Fascinated by the ancient craft of glassmaking, Belgian designer Anna began to explore the refracting nature of glass in the early 90s. Two decades on with her studio in the Czech Republic, she continues exploring this delicate material and its ability to reflect and absorb light. With each collection, she invites you to discover a beautiful world of organic forms, deep colours, and poetic structures.

Origin: **Czech Republic**  
Offering: **Glassware**



**Baobab**  
With its name paying homage to the ageing beauty of the baobab trees overlooking the African savannah, these luxury scented candles and diffusers are known for their size and original design. Brought to life in the enchanting landscape of Tanzania in 2002, the collection is now handcrafted in Belgium using the finest materials. Each piece is a sensory work of art, full of surprise and wonder.

Origin: **Belgium**  
Offering: **Home Fragrances**



**Eldvarm**  
When Louise Varre founded Eldvarm in 2014 she wanted to do more than create beautiful, functional fireplace accessories: she wanted to bring people together around the fire. Rooted in Scandinavian values of simplicity and sustainability, each product is carefully crafted by professional artisans in Europe.

Origin: **Sweden**  
Offering: **Fireplace Accessories**



**Fürstenberg**  
German porcelain brand Fürstenberg is grounded in exceptional design and discerning craftsmanship. Founded in 1747, their authentic approach to the craft has led them to collaborate with artists and designers around the globe. Their range of contemporary tableware and accessories is still created by hand to this day.

Origin: **Germany**  
Offering: **Tableware**



**Gardeco**  
These Belgian craftsmen are creators of hand-made objects of art and decoration that help complete interior schemes across the globe. Their collections showcase the work of talented artists specialising in ceramics, bronze and glass.

Origin: **Belgium**  
Offering: **Accessories**



**Giobagnara**  
Giobagnara celebrates the sensual strength of leather through elevated everyday objects. Subtle expressions that merge modernity and tradition, the collection spans smaller décor pieces alongside larger home accessories.

Origin: **Italy**  
Offering: **Accessories**



**Guaxs**  
Sculptural objects such as vases, vessels and lamps are made by hand using authentic and sustainable materials. Founders Annette and Anselm Schaugg seek to create individual and distinctive structures that carry unique character.

Origin: **Germany**  
Offering: **Accessories**





HEATSAIL

**Heatsail**  
Extending the outdoor season, Heatsail utilises innovative technology to engineer technical outdoor products that simultaneously provide warmth and light. Signature items like DISC and DOME increase the comfort of outdoor living with their integrated heating systems. A defining quality of this Belgian light specialist is the combination of modern technology and elegant design with uncompromising function, making them a sophisticated addition to any public space.

Origin: **Belgium**  
Offering: **Outdoor | Lighting**



**Iittala**  
Imbued with Scandinavian spirit, the Iittala brand began as a small glass factory in Finland in 1881. Today it continues to showcase a selection of timeless tableware, cookware and interior accessories: essential objects that are intended to enhance our everyday lives.

Origin: **Finland**  
Offering: **Tableware**



RUDI

**Rudi**  
The Rudi collection bridges the gap between sustainability, functionality, and aesthetics. Offering an array of accessories including valet trays, bowls, and boxes, all of which are hand-made in Italy from the finest regenerated leather.

Origin: **Italy**  
Offering: **Accessories**



SERAX

**Serax**  
Serax is a passionate family business that collaborates with designers all over the world including acclaimed creatives Ann Demeulemeester and Piet Boon. Craft is the key ingredient in their collection of desirable tableware and accessories.

Origin: **Belgium**  
Offering: **Tableware**



**Skultuna**  
Purveyor to the Royal Court of Sweden, this 400-year-old brand was founded by King Karl IX of Sweden. Hand-crafted in brass, their collection of fine metal objects includes contemporary candle holders, vases and decorative objects.

Origin: **Sweden**  
Offering: **Accessories**



**Utopia & Utility**  
Utopia and Utility's handmade pieces not only add character to interior schemes but can be considered future heirlooms that combine traditional materials in innovative ways. Combining functionality with fantasy, they fuse material elements like hand-blown stained glass, polished metal, and crafted wood.

Origin: **Finland**  
Offering: **Accessories**



valerie<sup>objects</sup>

**Valerie Objects**  
Antwerp-based design label Valerie Objects enjoy collaborating with designers, architects and artists to give daily objects their beauty back. With a distinctive style that feels modern and playful, their collection features furniture, tableware and accessories.

Origin: **Belgium**  
Offering: **Tableware | Furniture**



WEDGWOOD  
ENGLAND 1759

**Wedgwood**  
The story of this iconic English brand began in 1759 when founder Josiah Wedgwood began crafting elegant tableware with fine china and porcelain. Their timeless eclecticism and superior dedication to craftsmanship continue to capture attention today.

Origin: **Britain**  
Offering: **Tableware**



# Works

# Art

# &

# Craft

# of

THE PIECES THAT ENGAGE AND ENDURE.  
THE STORIES THAT INTRIGUE.





← Danish designer-makers Overgaard & Dyrman actively preserve traditional techniques, merging them with modern technology.



→ Contemporary American craftsmen Brightbound focus on the materiality of objects, imbuing each product with a handmade edge.





← Designed exclusively by Tollgård for masters in stone, The Refined Workshop, the Wave Collection was brought to life by the harmonious hands of man and machine. Founder Staffan Tollgård inspects the first edition created in Grand Antique marble: a stone with a remarkable history dating back to Roman times.

Before furniture was mass produced, the hand of the maker was always visible. We have always been fascinated by stories — by the artists and craftspeople behind the pieces and brands. Collected within these pages are some of the most dedicated, passionate and talented makers working in the world of furniture today. The red thread—the creative DNA—that binds these makers from more than a dozen countries is the value they place on how things are made, the questions of living that they answer, and the honesty of their ingredients. The result: pieces that engage and endure. Stories that intrigue. Beautifully functional design. The hand-working of metal, leather and wood has created its own language reminiscent of the principles of mid-century modern: less is more—honesty in manufacturing techniques and truth to the materials at their heart.

Words by:  
STAFFAN TOLLGÅRD  
FOUNDER & CREATIVE DIRECTOR



240+ brands dedicated to the best and the bold of modern and contemporary luxury furniture.

“We are incredibly proud of our curated network of brand partners, personally chosen for their unique mix of quality, passion and design excellence.”

Staffan Tollgård  
Founder and Creative Director

<ul style="list-style-type: none"><li>• &amp;Bespoke</li><li>• &amp;Tradition</li><li>• A.Petersen</li><li>• AK47</li><li>• Abstracta</li><li>• Agape</li><li>• Agapecasa</li><li>• Alentes</li><li>• Alessi</li><li>• Alias</li><li>• Alphenberg</li><li>• ANDlight</li><li>• Anglepoise</li><li>• Anna Torfs</li><li>• Anour</li><li>• Apparatus</li><li>• Aqua Creations</li><li>• Architect Made</li><li>• Arflex</li><li>• Ariake</li><li>• Armani Roca</li><li>• Artek</li><li>• Artemide</li><li>• Artifort</li><li>• Asplund</li><li>• Astep</li><li>• Atelje Lyktan</li><li>• Aytm</li><li>• B-Line</li><li>• BD Barcelona</li><li>• Baobab</li><li>• BassamFellows</li></ul>	<ul style="list-style-type: none"><li>• Bern Pederson</li><li>• Bert Frank</li><li>• Bieke Casteleyn</li><li>• Bla Station</li><li>• Bocci</li><li>• Bomma</li><li>• Buster &amp; Punch</li><li>• Brand Van Egmond</li><li>• Brdr. Krüger</li><li>• Brightbound</li><li>• Brokis</li><li>• Brunner</li><li>• Byarums Bruk</li><li>• CTO Lighting</li><li>• Cappellini</li><li>• Carl Hanson &amp; Son</li><li>• Case</li><li>• Cassina</li><li>• Catellani &amp; Smith</li><li>• Cattelan Italia</li><li>• Ceccotti Collezioni</li><li>• Chilewich</li><li>• Christofle</li><li>• Cocoon</li><li>• Collector Group</li><li>• Conde House</li><li>• Contardi</li><li>• Cuero</li><li>• DCW Editions</li><li>• DK3</li><li>• Dada</li><li>• Dare Studio</li></ul>	<ul style="list-style-type: none"><li>• De Castelli</li><li>• DeVorm</li><li>• Desalto</li><li>• Dicipline</li><li>• Diesel with Moroso</li><li>• Driade</li><li>• EOQ</li><li>• Eggersman</li><li>• Eikund</li><li>• Eldvarm</li><li>• Eleanor Pritchard</li><li>• Elitis</li><li>• Emmebi</li><li>• Emmemobili</li><li>• Ercol</li><li>• Erik Jorgenson</li><li>• Established &amp; Sons</li><li>• Ethimo</li><li>• Ethnicraft</li><li>• Expormim</li><li>• Exteta</li><li>• Fiam</li><li>• Fibre Designs</li><li>• Finn Juhl</li><li>• Flexform</li><li>• Flos</li><li>• Fogia</li><li>• Form &amp; Refine</li><li>• Foscarini</li><li>• Foursteel</li><li>• Frag</li><li>• Frama</li></ul>	<ul style="list-style-type: none"><li>• Frederica 1911</li><li>• Friends and Founders</li><li>• Fritz Hansen</li><li>• Fürstenberg</li><li>• Gabriel Scott</li><li>• Gallotti &amp; Radice</li><li>• Gan</li><li>• Gandia Blasca</li><li>• Gardeco</li><li>• Garsnas</li><li>• Gemla</li><li>• Gervasoni</li><li>• Getama</li><li>• Giobagnara</li><li>• Giopagini</li><li>• Giopatto and Coombes</li><li>• Giorgetti</li><li>• Guaxs</li><li>• Gubi</li><li>• Handvark</li><li>• Heatsail</li><li>• Heerenhuis</li><li>• Henge</li><li>• House of Finn Juhl</li><li>• IlItalia Finland</li><li>• IP44.de</li><li>• Indigenus</li><li>• JL Moller</li><li>• Jab Ansoetz</li><li>• Jot.Jot</li><li>• Juniper</li><li>• KBH</li></ul>	<ul style="list-style-type: none"><li>• Kallemo</li><li>• Karakter</li><li>• Kartell</li><li>• Kasthall</li><li>• Kettal</li><li>• Kevin Reilly Collection</li><li>• Klong</li><li>• Knoll</li><li>• Kymo</li><li>• Lambert &amp; Fils</li><li>• La Manufacture</li><li>• Lammhults</li><li>• Lampe Gras</li><li>• Lange</li><li>• Kymo</li><li>• Lapalma</li><li>• Lasvit</li><li>• Le Klint</li><li>• Lema</li><li>• Limited Edition</li><li>• Linteloo</li><li>• Living Divani</li><li>• Louise Roe</li><li>• Lumina</li><li>• Luteca</li><li>• Made by Hand</li><li>• Magis</li><li>• Malte Gormsen</li><li>• Man of Parts</li><li>• Mass Productions</li><li>• Mater</li><li>• Matthew McCormick</li><li>• Menu</li></ul>	<ul style="list-style-type: none"><li>• Meridiani</li><li>• Mernøe</li><li>• Michael Anastassiades</li><li>• Minotti</li><li>• Mobel Copenhagen</li><li>• Modo Luce</li><li>• Modus</li><li>• Molteni &amp; C</li><li>• Mood by Flexform</li><li>• Moooi</li><li>• Moroso</li><li>• Native Union</li><li>• Naver Collection</li><li>• Nemo</li><li>• New Tendency</li><li>• New Works</li><li>• Niche</li><li>• Nikari</li><li>• Norr11</li><li>• Northern</li><li>• Nuura</li><li>• O&amp;G Studio</li><li>• OKHA</li><li>• Oasiq</li><li>• Occhio</li><li>• Offect</li><li>• Oluce</li><li>• OneCollection</li><li>• Onno</li><li>• Orsjo</li><li>• PP Møbler</li><li>• Paola Lenti</li></ul>	<ul style="list-style-type: none"><li>• Parachilna</li><li>• Penta</li><li>• Petit Friture</li><li>• Phillip Jeffries</li><li>• Piet Boon</li><li>• Piet Hein Eek</li><li>• Pilat &amp; Pilat</li><li>• Poiat</li><li>• Poltrona Frau</li><li>• Porada</li><li>• Porro</li><li>• Punt</li><li>• Quasar</li><li>• RBW</li><li>• Resident</li><li>• RUDI</li><li>• Rakumba</li><li>• Rimadesio</li><li>• Röshults</li><li>• RS Barcelona</li><li>• SP01</li><li>• Sancal</li><li>• Scavolini</li><li>• Schonbuch</li><li>• Seletti</li><li>• Serax</li><li>• Sibast</li><li>• Skagerak</li><li>• SkLO</li><li>• Skram</li><li>• Skultuna</li><li>• Sovet Italia</li></ul>	<ul style="list-style-type: none"><li>• Stellar Works</li><li>• Stolab</li><li>• String Furniture</li><li>• Swedese</li><li>• System 180</li><li>• Tacchini</li><li>• Tala</li><li>• Taschen</li><li>• Thayer Coggin</li><li>• Time &amp; Style</li><li>• Token Furniture</li><li>• Tolix</li><li>• Ton</li><li>• Utopia &amp; Utility</li><li>• Valerie Objects</li><li>• Van Rossum</li><li>• Varaschin</li><li>• Vibia</li><li>• Vipp</li><li>• Vispring</li><li>• Vitra</li><li>• Volume K</li><li>• Warm Nordic</li><li>• Wedgewood</li><li>• When Objects Work</li><li>• XLBoom</li><li>• Zanotta</li><li>• Zeitraum</li></ul>
--	---	--	---	--	---	---	--



AGAPECASA



DESALTO

HOUSE OF  
FINN JUHL

GABRIEL SCOTT



ANOUR 



GARDECO

GIOBAGNARA

Giopato & Coombes

Baobab  
COLLECTION

**BassamFellows**

**BOCCI**



GUAXS



brightbound

*Byarums Bruk*

CECCOTTICOLLEZIONI



INDIGENUS

JUNIPER®

COCOON

DE CASTELLI



**Karakter**

KEVIN REILLY  
COLLECTION

KØBENHAVNS-MØBELSNEDKERI

**edra**

eikund



LASVIT





MADE BY HAND

MAN OF PARTS



Rakumba



MERIDIANI

MICHAELANASTASSIADES

MOROSO<sup>®</sup>  
the beauty of design

RÖSHULTS

Rubn

RUDI

Molteni & C

NEMO

NICHE

SERAX

SkLO

skram

O&G

Occhio

OKHA



SYSTEM 180



ONNO

ONECOLLECTION

OVERGAARD & DYRMAN



TIME & STYLE

TOKEN

PIETBOON

porada



valerie objects

VAN ROSSUM  
EST. 1978

VIBIA



RESIDENTIAL:  
TOLLGARD SHOWROOMS  
+44 (0)20 7952 6070 ~ BELGRAVIA  
+44 (0)20 8067 2123 ~ CHELSEA HARBOUR  
SHOP@TOLLGARD.COM

COMMERCIAL:  
TOLLGARD CONTRACTS  
+44 (0)20 7952 6063  
CONTRACTS@TOLLGARD.COM

TOLLGARD

[WWW.TOLLGARD.COM](http://WWW.TOLLGARD.COM)